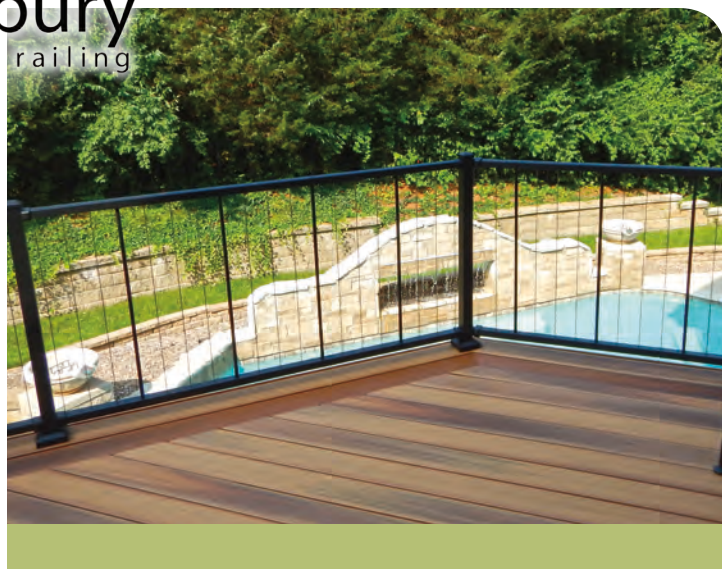


MADE
IN THE
USA 

VertiCable®

Welcome Home
Contemporary vertical cables provide virtually unobstructed views



VertiCable®

It's Your View

Enjoy it with Westbury VertiCable® (Style C80)

VertiCable® offers contemporary vertical cables and balusters providing an architectural style and virtually unobstructed views. All sections are factory assembled, tensioned, and shipped on pallets ready for quick installation. VertiCable® hardware mirrors Westbury® C-Series products allowing consistent design, performance, and configuration for the contractor or builder. VertiCable® is available in 12 standard AAMA 2604 compliant powder coated colors. Custom AAMA 2604 colors are available as special order. AAMA 2605 colors are all special order.



VERTICABLE® SPECIFICATIONS

- Section Heights: 36", 42"
- Section Lengths: 4', 5', 6', 7', 8'
(7' & 8' in 36" height only)
- Stair Rail Lengths: 4', 5', 6'
- C80 Baluster: 5/8" round
- Cable Spacing: 3" c/c
- Stylish Top Rail: 1-3/4" w (.090") x 1-3/8" t (.085")
- Bottom Rail: 1-3/4" w (.080") x 1-1/4" t (.080")
- 1/8" Stainless Steel Cable with Fasteners
- Bottom Rail Support: 7', 8'
- Stair Sections Rack 30° - 40°
with Standard Stair Mounts (included)
- Straight Sections Rack 1° - 10°
with Stair Swivel Mounts (not included)
- Stair Sections Rack 20° - 40°
with Stair Swivel Mounts (not included)



VertiCable® Gates in 36", 48", and 60" widths.
36" x 36" Gate shown above



drink rail



- Easily Attaches to Westbury® C Series Crossover Post System
- Solid Wall Construction for Strength & Durability

VertiCable® with Level Crossover Post Offers a Contemporary and Streamlined Look. Works well with Westbury® Drink Rail. Color: Bronze Fine Texture

Available Standard Colors



Satin Black



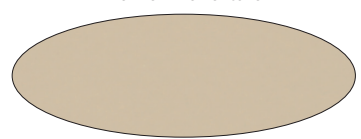
Black Fine Texture



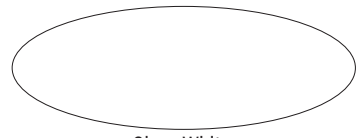
Ninety Bronze



Bronze Fine Texture



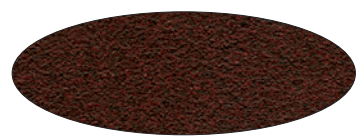
Gloss Beige



Gloss White



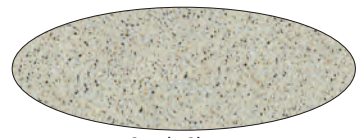
White Fine Texture



Brown Fine Texture



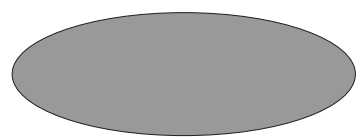
Speckled Walnut



Sandy Shore



Chocolate



Silver

Exclusive DSI Powder Coating Process

AAMA 2604 & AAMA 2605



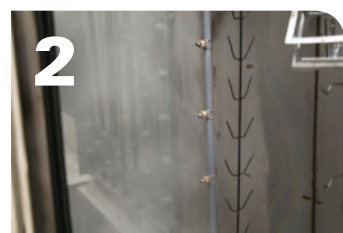
Verified AAMA 2604 Compliant Powder Coating

Westbury® Aluminum Railing powder coating is an uncompromising quality created by state-of-the-art technology. This is the highest quality powder coating on the market with a lifetime-limited warranty giving you peace of mind in your investment.



1

The raw premium-grade aluminum is inspected to be free of blemishes and is not exposed to the outdoor elements.



2

The product enters a heated acidic cleaning stage to remove extrusion debris and fabrication oils.



3-6

- CLEAN: City water rinse
- CLEANER: Recycling reverse osmosis water rinse
- CLEANEST: Pure reverse osmosis water rinse
- SEALER: Dried-in-place aluminum sealer



7-8

A 200 MPH air blast removes water drops from the pre-treated aluminum. A convection oven completes the dry-off process.



9

Powder is applied with 18 automated and 2 manual spray guns. Compressed process air is dried to -35°F Dew Point for superior adhesion.



10

The powder coating is then bonded and adhered to the aluminum sub-straight in a 400 degree cure stage.

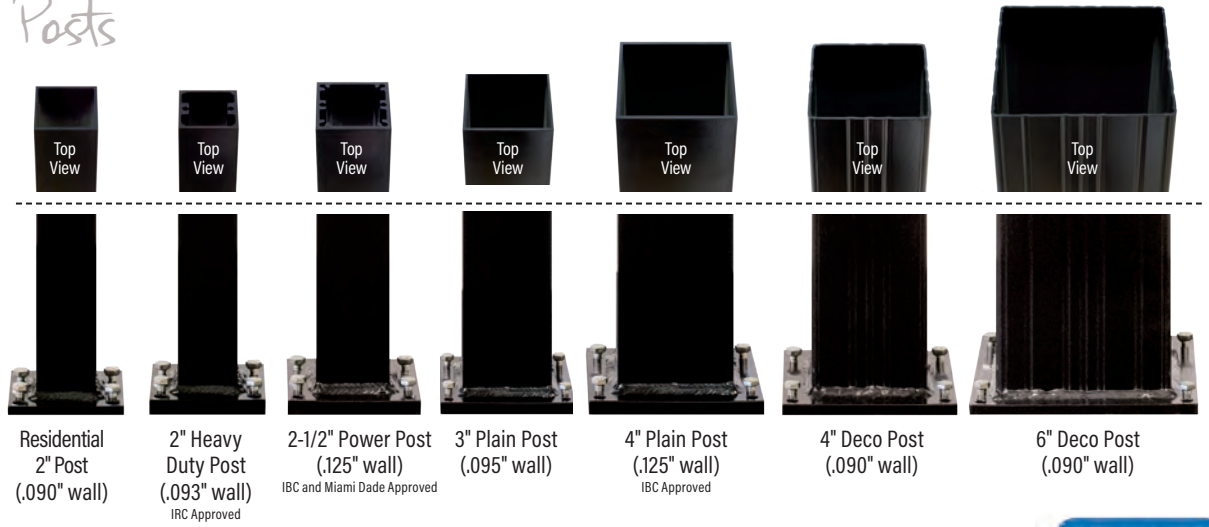


DSI is a PCI 4000 certified and verified AAMA 2604 and AAMA 2605 compliant powder coating applicator. The powder coating process is accredited by the American Architectural Manufacturing Association and the Powder Coating Institute. Our powder coating is custom blended from a Super Durable Polyester TGIC (Triglycidyl Isocyanurate) resin-base, using premium pigmentation to meet AAMA 2604 specifications. Our AAMA 2605 is a fluorocarbon polymer resin system.

VertiCable® Accessories

Westbury® Accessories add the finishing touch to your masterpiece. A variety of post sizes and wall thicknesses add strength to your railing. The combination of mounts and crossover options provides you with the ability to adapt Westbury® railing to your needs. Optional post caps finished off by the convenience of a 2-piece post flair creates a variety of looks.

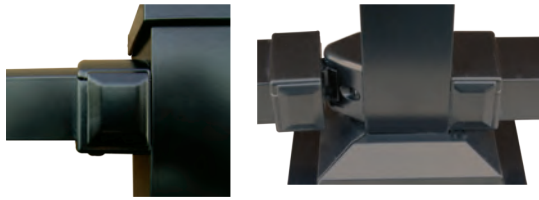
Posts



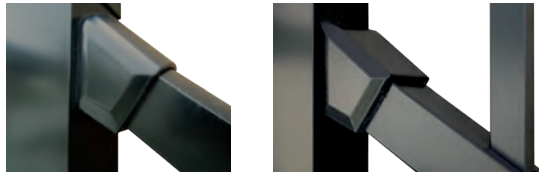
*Testing Results - CCRR-0163 complies with IBC⁺, IRC⁺, and FBC. Note: Please check with local code authorities for requirements.



Mounts



Wall & Angle Swivel Mounts



Stair Mounts



Stair Swivel Mounts



Double Swivel Stair Mount

Crossovers



Corner Crossover Post*

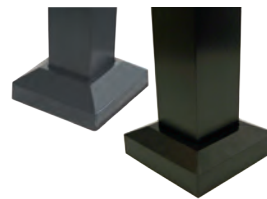


Stair Crossover Post*



Level Crossover Post*

Accessories



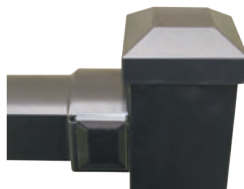
2", 2-1/2", 3", 4" & 6" Post Flair (2-piece)



Rail Support



Welded Corner



Flat Cap (2", 2-1/2", 3", 4", 6")



Ball Cap (2", 2-1/2", 4")



Magenta Star Ornamental
Lights (Low Voltage)

±Patent No. 8,998,175



westburyrailing.com

We have tried to make this catalog comprehensive and factual. We reserve the right to discontinue at any time, without notice, colors, materials, equipment and availability. Since some information may have been updated since the time of printing, we are not responsible for typographical or pictorial errors. Materials shown may vary slightly from actual colors. ©Digger Specialties 2018 SP 04/18 99781