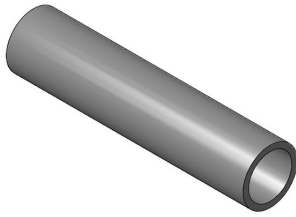


ADA Continuous Handrail



1-3/8" Aluminum Handrail

- Available in 8', 10', and 16' Lengths



Internal Connector

- Internal Connector is used to connect handrail(s) and elbow(s)
- Collar Ring Included
- Screws included to secure Connector to rail



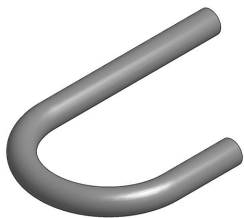
Collar Ring

- Used to cover splice
- Included with Internal Connector, Wall Return, and Adjustable Elbow



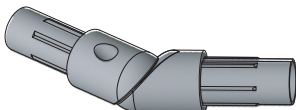
Internal End Cap

- Used to cap off handrail if not returning to a wall or post



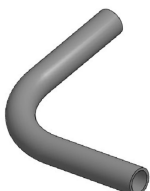
180° Elbow

- Protrudes past a post and returns to the post



Adjustable Elbow

- User Friendly
- Works from 0° - 90°
- (2) Collar Rings Included
- Screws included to secure Elbow to rail



90° Elbow

- Used for Inside corners
- Use (2) of these returns to wrap around a 2" or 4" post



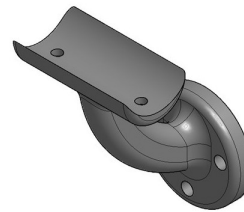
90° Welded Elbow

- Used for Outside Corners



Inside Corner Mount

- Used when an inside corner is needed on a level area
- Use with 90° bent elbow
- Fasteners Included



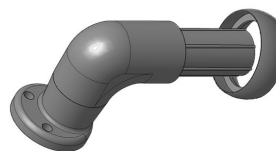
Wall Mount

- Used to attach handrail to wall or post
- Includes (2) Stainless Steel screws to attach handrail
- Has (3) 1/4" holes for fastening to wall or post (Fasteners included)
- Recommended every six feet



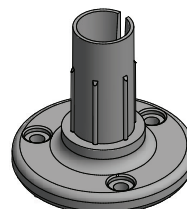
Extended Wall Mount

- Used to attach handrail to wall or post
- Includes (2) Stainless Steel screws to attach handrail
- Has (3) 1/4" holes for fastening to wall or post (Fasteners included)
- Recommended every six feet



Wall Return

- To return to a wall from handrail
- Collar Ring Included
- Screws Included to secure Return to wall or post
- Screws included to secure Return to rail



Wall End Mount

- Use when ending into a wall
- Screws Included to secure Mount to wall or post
- Screws included to secure Mount to rail