



**GenStone**<sup>®</sup>  
*The Beauty of Stone Made Easy.*<sup>™</sup>

**BRICK INSTALLATION GUIDE**



## REQUIRED FOR ALL EXTERIOR INSTALLATIONS

- Hand Saw
- Utility Knife
- Tape Measure
- Caulking Gun for a 10 oz Tube
- 1.625" Non-Corrosive Deck Screws
- 2.50" Non Corrosive Deck Screw for Ledgers
- Sandpaper
- PL Adhesive (200 or 300 is recommended)
- Level
- Drill
- Screw Driver Bits
- Framing Square
- Marker
- Gloves
- Safety Goggles and Glasses
- Big Stretch White Caulking

## RECOMMENDED FOR EXTERIOR INSTALLATIONS

- Tyvek HomeWrap
- Circular or Table Saw
- GenStone Color Match Caulking
- GenStone Paint Kits

## REQUIRED FOR OVER BRICK, CONCRETE AND STUCCO

- Tyvek HomeWrap
- Tapcon Fasteners

## REQUIRED FOR INTERIOR OVER DRYWALL

- Hand Saw
- Utility Knife
- Tape Measure
- Caulking Gun for a 10 oz Tube
- 2" Drywall Screws
- Level
- Sandpaper
- Drill
- Screw Driver Bits
- Framing Square
- Marker
- Gloves
- Safety Goggles and Glasses
- Big Stretch White Caulking

**NOTE:** PL Adhesive or any other construction adhesive is not recommended for interior projects

## RECOMMENDED FOR INTERIOR INSTALLATIONS

- GenStone Color Match Caulking
- GenStone Paint Kits

## PAINT KITS AND CAULKING

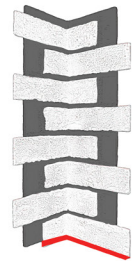
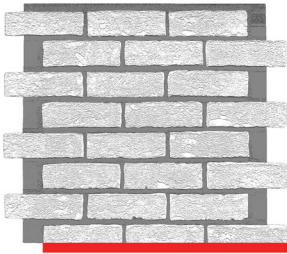
<b>Color Match Caulking</b>	One for every 400 SQFT of GenStone and one for every color match caulking
<b>White Caulking</b>	One for every 100 SQFT of GenStone installed
<b>Paint Kits</b>	One for every 400 SQFT of GenStone and one for every color match caulking

## PREPARATION

GenStone Products are designed to be applied to any flat structural substrate that is clean and free of debris. The positive shiplap edge (red below) always goes on the top. Stagger the connections throughout the wall to avoid visible seams.

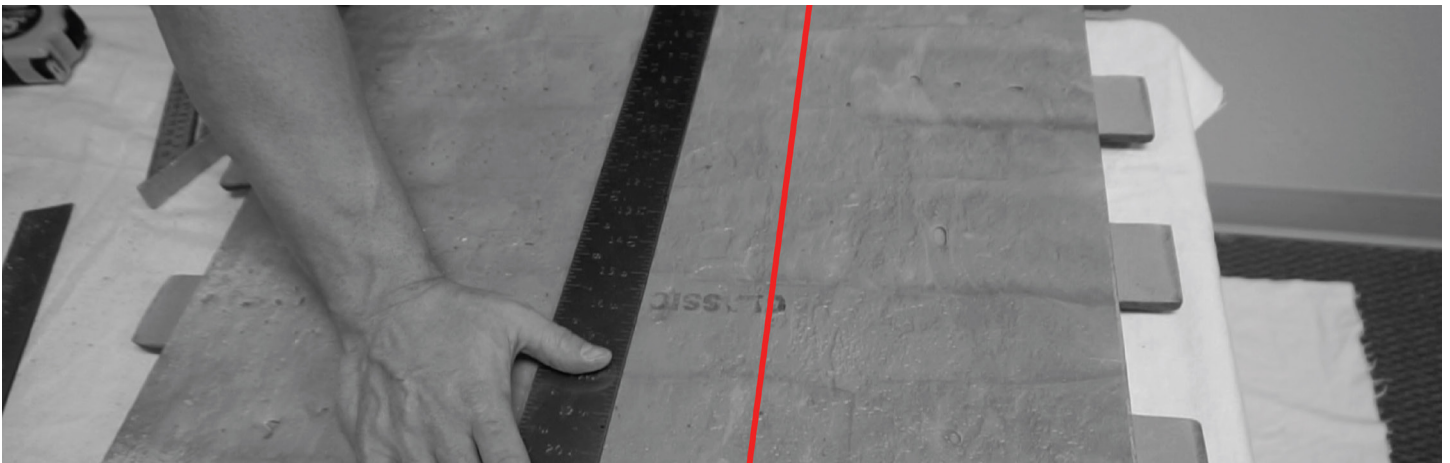
## Tips for Success

- Let your panels acclimate for 48 hours
- Wait for a days of consecutive moderate temps
- Always paint exposed raw material left by cuts
- Snap a chalk line, do not level with the ground



## MEASURE AND MARK

Working from left to right, measure from the positive shiplap edge of the previous panel, corner or finished edge and mark your cut on the flat (back) side of the panel. Use a straight edge and marker to draw a cut line you can follow with your hand or power saw.



## CUTTING TO SIZE

<b>Circular Saw</b>	Panel flat (back) side up, be sure to protect the face (front) of the panel
<b>Table or Miter Saw</b>	Place the panel front side up before running it through the saw
<b>Hand Saw</b>	Place the panel flat side up, protect the face of the panel while cutting
<b>Small Cuts</b>	When making precise cuts to account for hose bibs, electrical boxes, electrical outlets and other installation obstacles, we recommend using a hand saw, utility knife, drywall saw or jig saw. Sandpaper or a rasp can be used to file a small area to size after making the cuts.

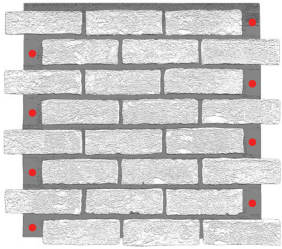
*The manufacturing process can leave strands of foam on the face and at the edge of the panels. These are easily removed by hand or corrected by trimming with a utility knife or sanding.*



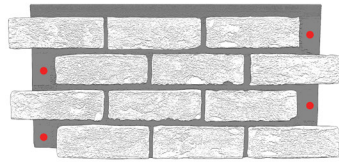
## ATTACHING PANELS AND CORNERS

For exterior projects, start with an "S" pattern of construction adhesive on the back of each Product. Adhesive is not recommended for interior projects with a drywall substrate. Ensure the Product is level before fastening the Products with screws along the positive shiplap edge as outlined by Product below. Next, feel throughout the face of the panel for any flex, if you notice any flex between the panel and the substrate, eliminate the flex with a screw in the face of the Product.

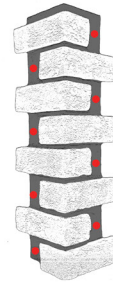
This fastener can be hidden under a stone and concealed later with GenStone eXact Color caulking and paint. The last step before repeating the process with the next Product is to run a bead of GenStone Big Stretch caulk along the positive shiplap edge. The caulking creates a water tight connection and helps prevent movement.



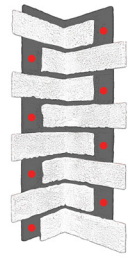
Panel



Half Panel



Outside Corner



Inside Corner

### Panel and Half Panel

Centered in each area where the tabs (horizontally overhanging bricks) from the next panel will conceal the fastener.

### Corners

Centered in each area where the tabs (horizontally overhanging bricks) from the next panel will conceal the fastener.

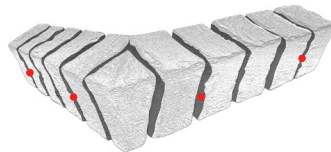
*After attaching a panel or corner, you may notice it is difficult to slide the next panel into place. To slide the next panel or corner into place, simply loosen the fasteners slightly, slide the panel or corner into place and then tighten the fastener again before sliding the panel or corner into its place.*

## ATTACHING LEDGERS

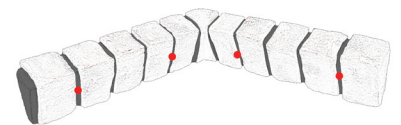
For exterior projects, start with an "S" pattern of construction adhesive on the back of each ledger. Adhesive is not recommended for interior projects with a drywall substrate. Run a bead of GenStone Big Stretch white caulking in the recessed niche of the ledger where it will connect to the panel. Ensure the ledger is level before fastening it with evenly placed screws in the face of the ledger as shown below. After the ledger is secure, create a water tight connection to the substrate where the ledger meets the wall by running a bead of GenStone Big Stretch or eXact Color caulking between the wall and ledger.



Ledger



Outside Corner Ledger



Inside Corner Ledger

## ATTACHING TRIM

For exterior projects, start with an "S" pattern of construction adhesive on the back of each trim piece. Adhesive is not recommended for interior projects with a drywall substrate. Before attaching the trim, run a bead of Big Stretch caulk along the side of the trim piece where it will come into contact with other GenStone Products or obstructions such as electrical boxes. Ensure the Product is level before fastening the trim with screws in the face of the trim as outlined below.



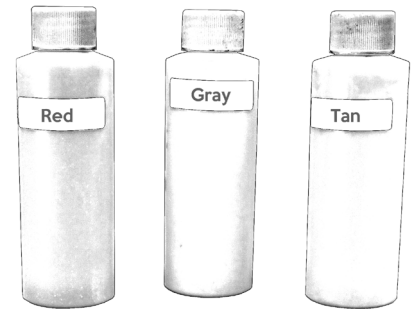
Trim

## FINISHING TOUCHES

After all of your panels, ledgers and trim are securely fastened, go back and conceal any fastener holes in the face of the Products with a GenStone eXact Color caulking kit.

### HOW TO TINT THE CAULKING

Follow the step by step video found on the GenStone website ([genstone.com](http://genstone.com)) to tint the color match caulking. The ledgers will require only one of the 3 base colors, while the stone pieces require a combination of all 3 paints provided in the kit. For larger projects, dedicated eXact Color caulking kits are suggested for the stone and ledgers.



### USING A PAINT KIT TO BLEND THE CAULKING

After concealing the fastener holes with the color match caulking, wait for the caulking to dry before painting the caulk. We recommend mixing a combination of the 3 paint colors provided in a separate paper or plastic bowls, one for stone touch ups and one for ledger touch ups. The paint is intended to create a perfect blend between the colors around the fastener holes you concealed and the surrounding colors of the Products.

### PAINTING EXPOSED UNPAINTED RAW MATERIAL

Any exposed raw material must be painted thoroughly. Unpainted material will discolor when exposed to sunlight for an extended period of time. You may find exposed raw material where you have cut the GenStone Products.

## SPECIAL CONSIDERATIONS

<b>Warranty</b>	Failure to follow these installation instructions will void the 25 year limited warranty.
<b>Heat Sources</b>	If you can hold your hand on the surface where you plan to install GenStone for 10 seconds while the heat source is running, GenStone is OK to be installed on that surface, if not, GenStone is not recommended for the area. It is the owner's sole responsibility to ensure all panels and accessories will not come in contact with flames or embers.
<b>Attaching</b>	For exterior projects, premium construction adhesive is required on the back of all panels, ledgers and trim. Fasteners are required for both exterior and interior projects.
<b>Maintenance</b>	GenStone will perform similar to wood siding in most climates. Follow the GenStone Use and Care guide and examine your GenStone once per year for any sign of discoloration.
<b>Building Codes</b>	Review your local building code prior to installing GenStone. Strapping may be required for exterior installations in Canada.

**GenStone**<sup>®</sup>

EMAIL  
[info@genstone.com](mailto:info@genstone.com)

CALL  
1-800-425-0788

ONLINE  
[www.genstone.com](http://www.genstone.com)