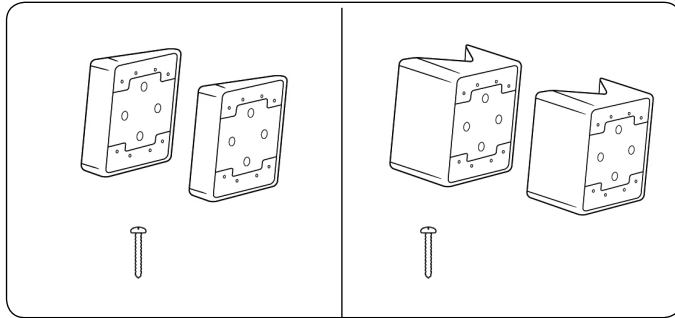


Instructions for 22.5° & 45° Adaptor Blocks for Straight Sections



Component List:

Brackets - 2
#10 x 2 1/2" SS Screw - 8

Components from Railing Kit
(not pictured)

#10 x 1 1/2" SS Screw - 8

Tools Required:

Measuring tape

Drill

5/32" Drill bit

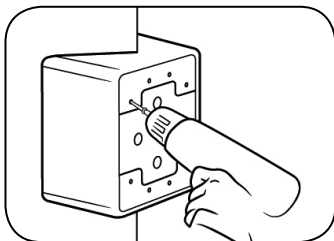
#2 Square Driver bit

Always wear safety goggles

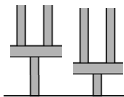
Installer is responsible for quality workmanship and meeting all building codes.

MADE IN THE USA

1 Attach Bottom Angled Adaptor Blocks



Note: 45° brackets mount on the corners of your post and 22.5° brackets mount on the face of the post.



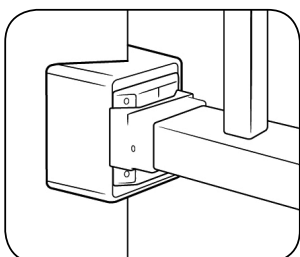
Note: Color Guard Rail Systems are available with either 4" or 2" clearance. Your dealer carries the system that meets your local building codes.

Locate and mark on your posts where the bottom adaptor blocks will be installed. Mark post at 3 1/8" from surface for 4" or 1 1/8" from surface for 2" clearance.

Locate and securely mount the bottom angle adapter blocks **using the 1 1/2" screws provided in the railing kit**. Each angle adaptor block requires 4-1 1/2" screws. It will be necessary to drill pilot holes for the attachment screws as they may penetrate the metal post bracket in some locations. On wood post pre-drill vinyl only.



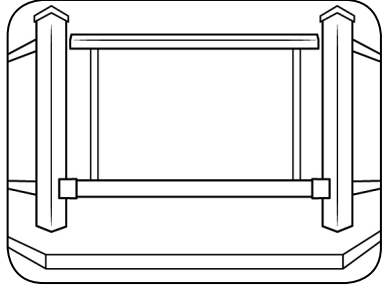
2 Attach Bottom Rail Section



Place external molded brackets onto bottom rail and assemble your rail section per instructions included with those sections – **using the 2 1/2" mounting screws included with the angled adaptor block kit**. The external molded brackets are designed to allow mounting after the section is located in the molded brackets.

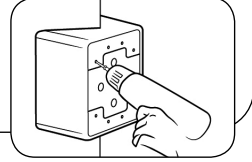
The bottom rail external molded bracket may be placed into the lower angle adaptor block and securely mounted using the 4 screws provided. It will be necessary to drill pilot holes with the 3/16" bit for the attachment screws as they may penetrate the metal post bracket in some locations.

3 *Attach Top Angled Adaptor Block*

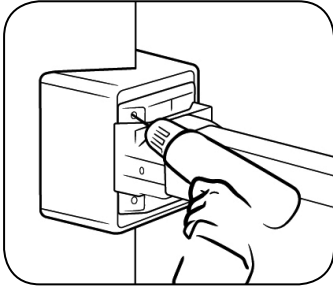


To ensure accurate placement of top angle adaptor block place a baluster from the rail kit into each end of the bottom rail and place top rail in position. Place external bracket on ends of rail. Mark position for angled adaptor block. **IMPORTANT:** Double check that the height of rail is *at least 36" or 42"* to top of rail. Adjust as necessary.

Attach adaptor block **using the 1 ½" screws provided in the railing kit.**



4 *Complete Rail Section Installation*



Assemble per instructions included with those sections – **using the 2 ½" mounting screws included with the angled brackets kit** attach external molded bracket and rail section to the angle bracket which is mounted to post. Put covers over screws.