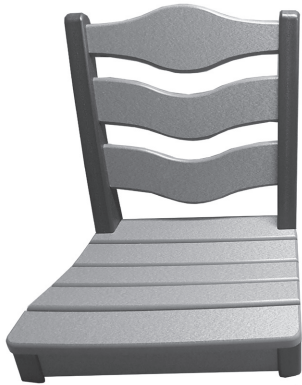


# ASSEMBLY INSTRUCTIONS

## Traditional Swivel Dining, Counter Height or Bar Height Chair

**Tools Not Included but Required:** 7/16" wrench, or socket & ratchet and a power drill

Assembled  
Seat & Back



Assembled  
Base



Hardware



### Parts Included:

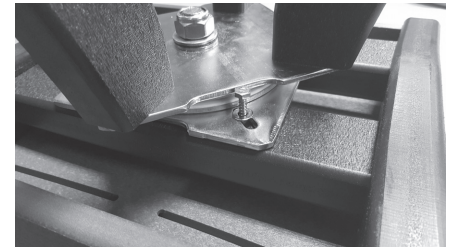
- 1 - Assembled Seat & Back
- 1 - Assembled Base

### Stainless Steel Hardware Included:

- 4 - 1-3/4" Lag Screws
- 4 - Flat Washers

1. Lay the assembled seat upside down on the edge of a table. Place the assembled base onto the supports under the seat and attach using four 1-3/4" lag screws with flat washers.

### Step 1



2. Enjoy your traditional swivel chair!



*Your outdoor furniture is guaranteed for 20 years to never crack, split or fade. To clean, wash with soap and water. For tough stains, use a solution with water and soft scrub or try our furniture cleaner.*

**PerfectChoice<sup>®</sup>** *furniture*

The perfect choice for lasting comfort and value.

477 Vogt Lane • Chilton, WI 53014 • 800-817-8833  
www.perfectchoicefurniture.com • www.birdschoice.com