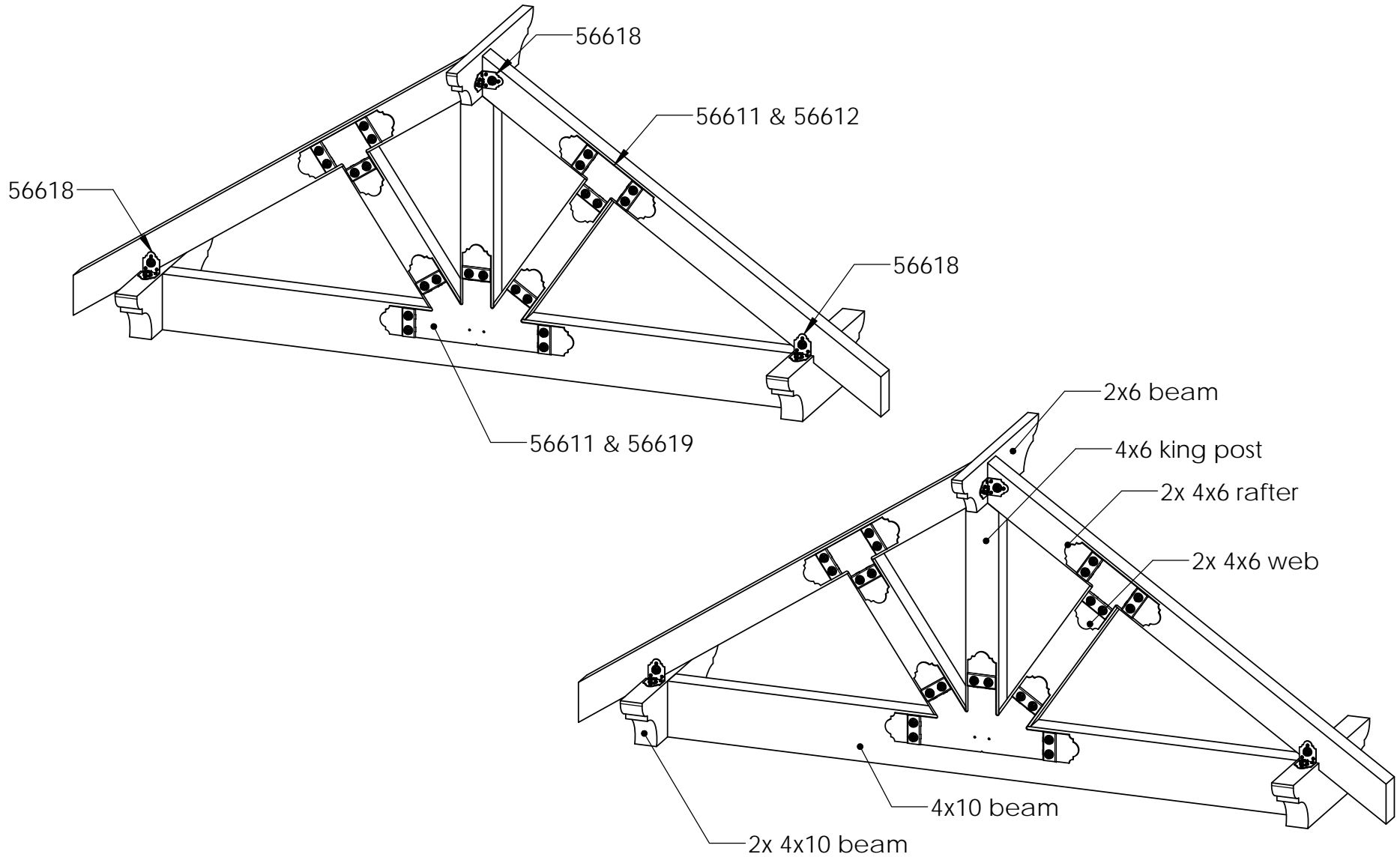


# Truss Construction

## 56619 Truss Base Fan Calculator

8:12

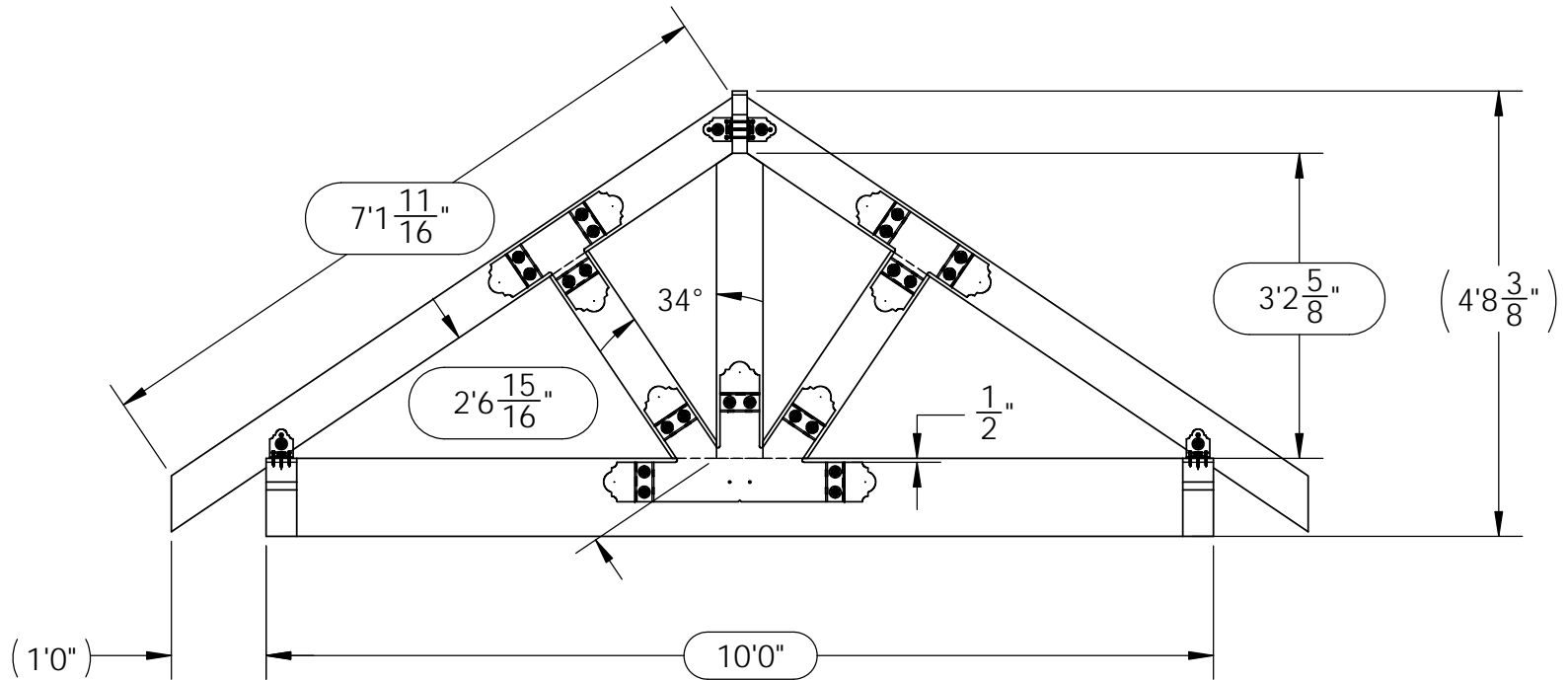




# Truss Construction

## 56619 Truss Base Fan Calculator

8:12 OZCO Truss Fan Calculator							
Beam (in)	King Post (in)	Rafter (in)	Web (in)	Beam (in)	King Post (in)	Rafter (in)	Web (in)
96	30.54	75.19	24.23	145	47.06	104.75	37.93
97	30.88	75.79	24.51	146	47.39	105.36	38.21
98	31.21	76.40	24.79	147	47.73	105.96	38.49
99	31.55	77.00	25.07	148	48.07	106.56	38.77
100	31.89	77.60	25.35	149	48.41	107.17	39.05
101	32.23	78.21	25.63	150	48.74	107.77	39.33
102	32.56	78.81	25.91	151	49.08	108.37	39.61
103	32.90	79.41	26.19	152	49.42	108.98	39.89
104	33.24	80.02	26.47	153	49.75	109.58	40.17
105	33.57	80.62	26.75	154	50.09	110.18	40.45
106	33.91	81.22	27.03	155	50.43	110.79	40.73
107	34.25	81.83	27.31	156	50.77	111.39	41.01
108	34.59	82.43	27.59	157	51.10	111.99	41.28
109	34.92	83.03	27.86	158	51.44	112.60	41.56
110	35.26	83.64	28.14	159	51.78	113.20	41.84
111	35.60	84.24	28.42	160	52.11	113.80	42.12
112	35.93	84.84	28.70	161	52.45	114.41	42.40
113	36.27	85.45	28.98	162	52.79	115.01	42.68
114	36.61	86.05	29.26	163	53.12	115.61	42.96
115	36.94	86.65	29.54	164	53.46	116.22	43.24
116	37.28	87.26	29.82	165	53.80	116.82	43.52
117	37.62	87.86	30.10	166	54.14	117.42	43.80
118	37.96	88.46	30.38	167	54.47	118.03	44.08
119	38.29	89.07	30.66	168	54.81	118.63	44.36
120	38.63	89.67	30.94	169	55.15	119.23	44.64
121	38.97	90.27	31.22	170	55.48	119.84	44.92
122	39.30	90.88	31.50	171	55.82	120.44	45.20
123	39.64	91.48	31.78	172	56.16	121.04	45.48
124	39.98	92.08	32.06	173	56.50	121.64	45.76
125	40.32	92.69	32.34	174	56.83	122.25	46.04
126	40.65	93.29	32.62	175	57.17	122.85	46.32
127	40.99	93.89	32.90	176	57.51	123.45	46.60
128	41.33	94.50	33.18	177	57.84	124.05	46.88
129	41.66	95.10	33.46	178	58.18	124.66	47.16
130	42.00	95.70	33.74	179	58.52	125.26	47.44
131	42.34	96.31	34.02	180	58.86	125.86	47.72
132	42.68	96.91	34.30	181	59.19	126.46	47.99
133	43.01	97.51	34.57	182	59.53	127.07	48.27
134	43.35	98.12	34.85	183	59.87	127.67	48.55
135	43.69	98.72	35.13	184	60.20	128.27	48.83
136	44.02	99.32	35.41	185	60.54	128.87	49.11
137	44.36	99.93	35.69	186	60.88	129.48	49.39
138	44.70	100.53	35.97	187	61.21	130.08	49.67
139	45.03	101.13	36.25	188	61.55	130.68	49.95
140	45.37	101.74	36.53	189	61.89	131.28	50.23
141	45.71	102.34	36.81	190	62.23	131.89	50.51
142	46.05	102.94	37.09	191	62.56	132.49	50.79
143	46.38	103.55	37.37	192	62.90	133.09	51.07
144	46.72	104.15	37.65	193	63.24	133.69	51.35



Board	Length
Beam	10'0"
Rafter	7'1 11/16"
King Post	3'2 5/8"
Web Post	2'6 15/16"

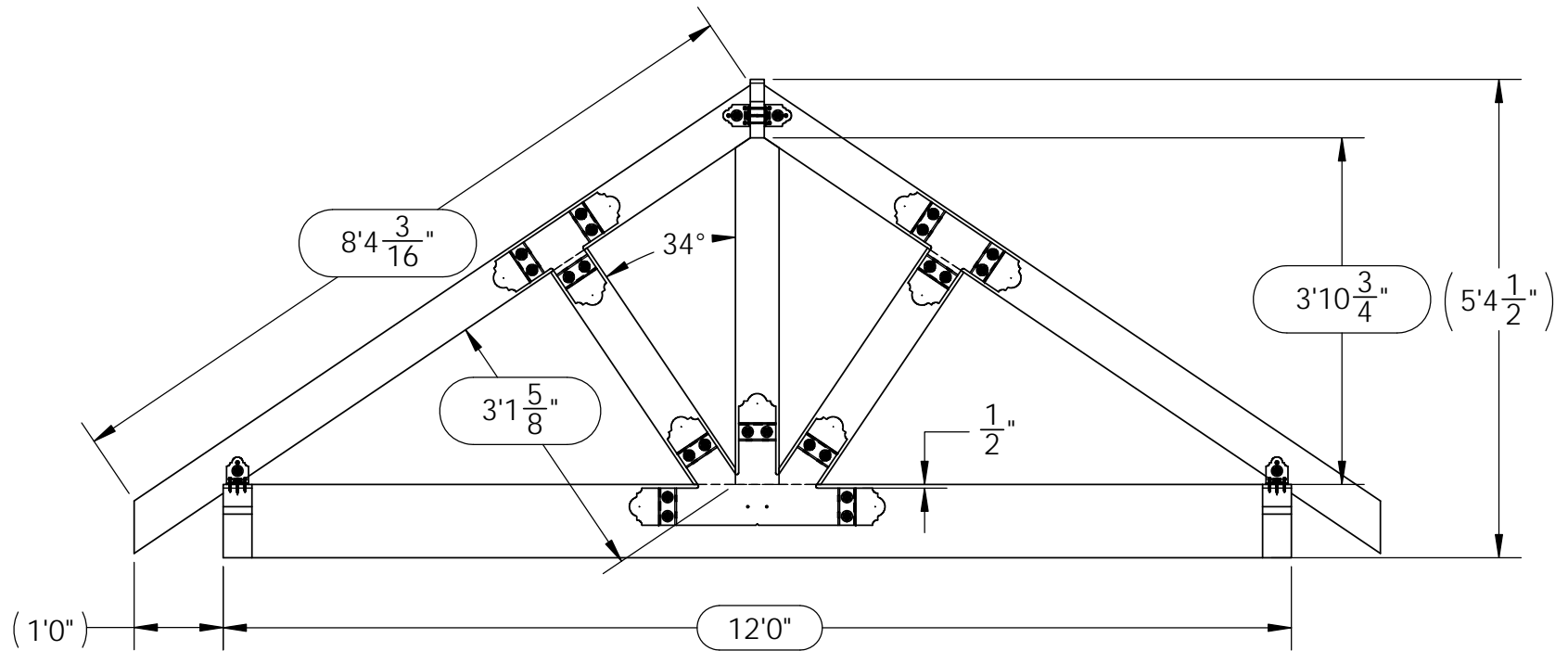
Weight: 385.93 LBS  
 Scale: 1:24  
 Last updated: 6/23/2017

**56619 Truss Base Fan Calculator**

# Truss Construction

## 56619 Truss Base Fan Calculator

8:12



Board	Length
Beam	12'0"
Rafter	8'4 $\frac{3}{16}$ "
King Post	3'10 $\frac{3}{4}$ "
Web Post	3'1 $\frac{5}{8}$ "

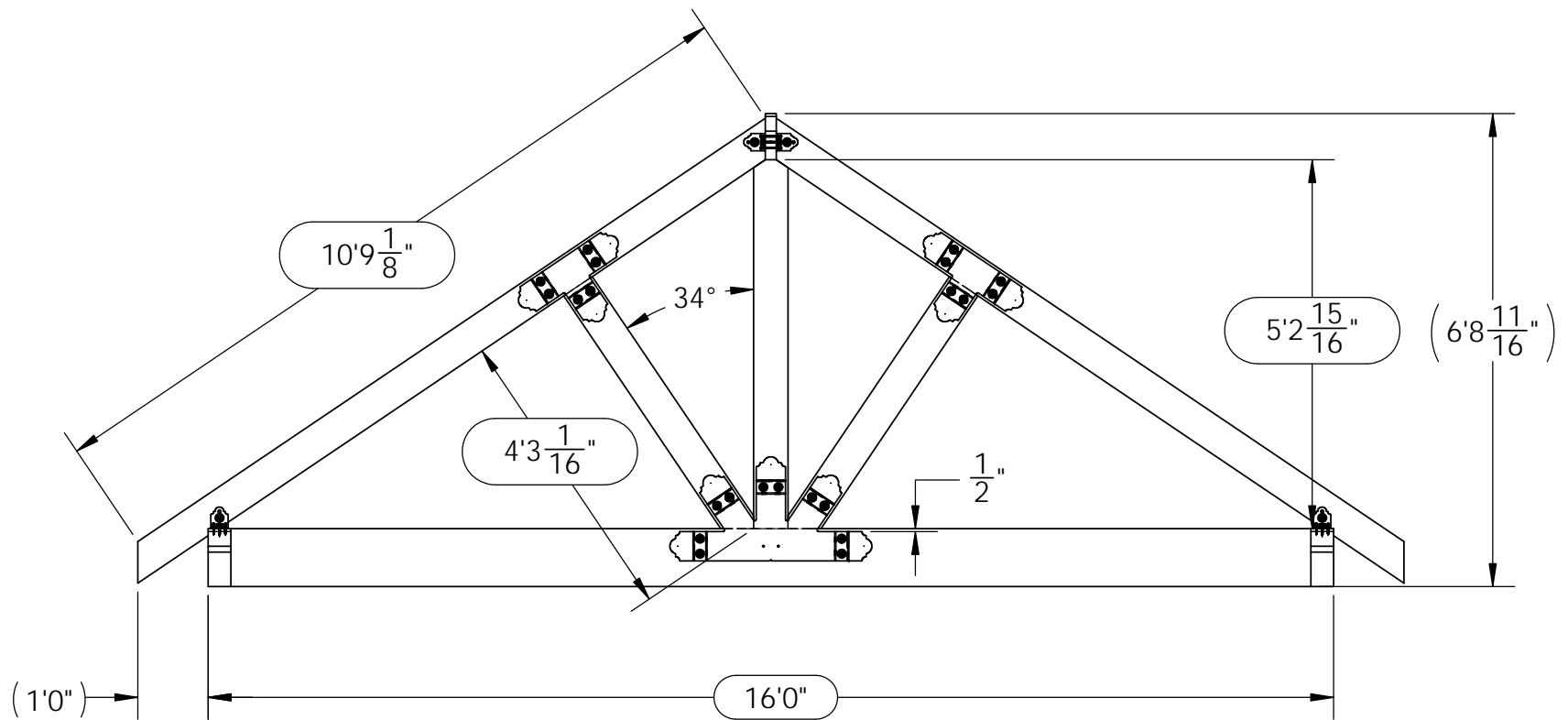
Weight: 443.03 LBS  
 Scale: 1:24  
 Last updated: 6/23/2017

56619 Truss Base Fan Calculator

# Truss Construction

## 56619 Truss Base Fan Calculator

8:12



Board	Length
Beam	16'0"
Rafter	10'9 1/8"
King Post	5'2 15/16"
Web Post	4'3 1/16"

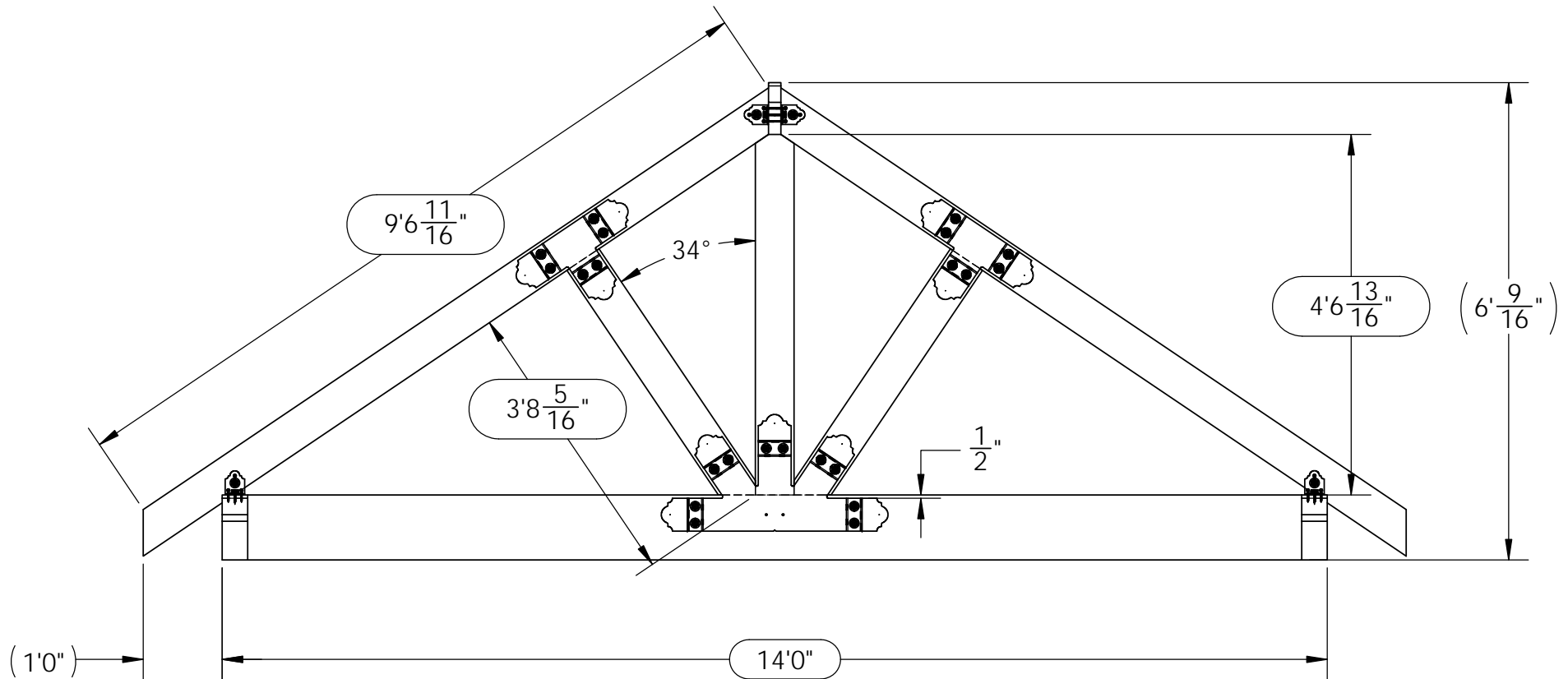
Weight: 557.23 LBS  
 Scale: 1:30  
 Last updated: 6/23/2017

**56619 Truss Base Fan Calculator**

# Truss Construction

## 56619 Truss Base Fan Calculator

8:12



Board	Length
Beam	14'0"
Rafter	9'6 11/16"
King Post	4'6 13/16"
Web Post	3'8 5/16"

Weight: 500.13 LBS  
 Scale: 1:24  
 Last updated: 6/23/2017

**56619 Truss Base Fan Calculator**