

SNAP 'N LOCK
BALUSTER KIT

SNAP 'N LOCK
BALUSTER KIT

INSTALLATION
is a SNAP



1
Screw

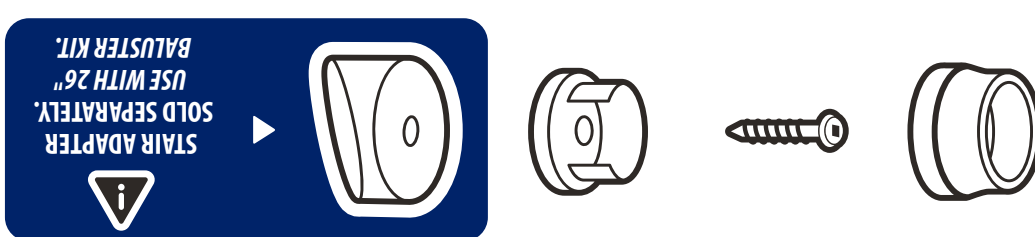


2
Snap



3
Lock

**GREAT FOR
NEW RAILINGS
OR RETROFITTING
WOOD RAILING
BALUSTERS**



STAIR ADAPTER
SOLD SEPARATELY.
USE WITH 26"
BALUSTER KIT.

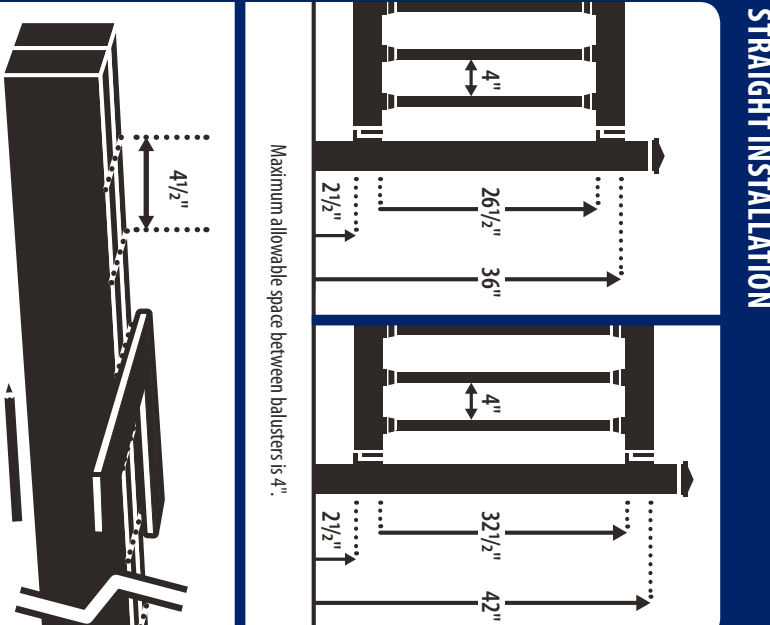


ColorGuardRailing.com

SNAP 'N LOCK
BALUSTER KIT

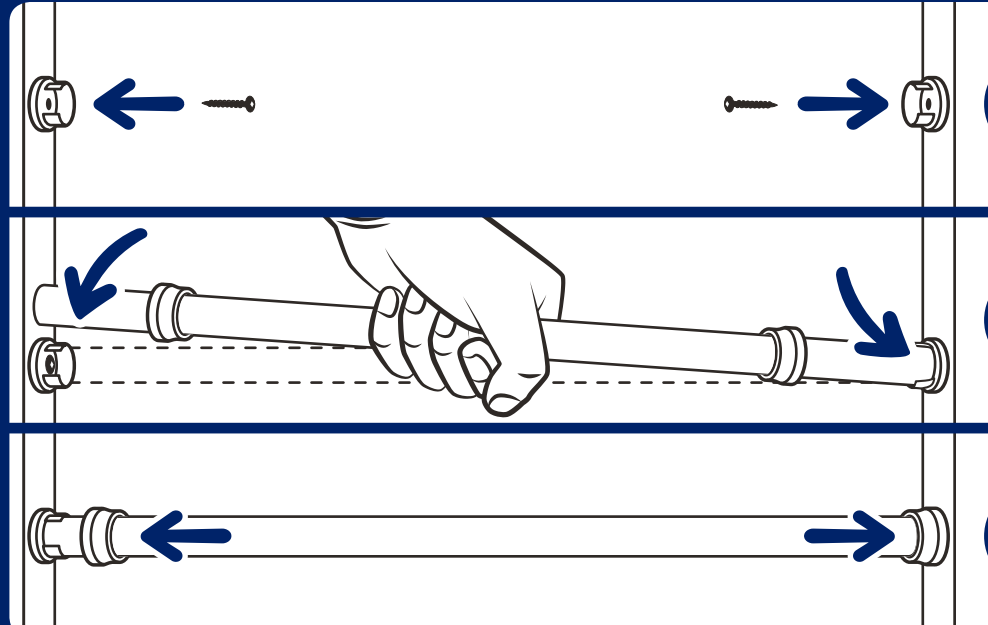
SNAP 'N LOCK
BALUSTER KIT

INSTALLATION
INSTRUCTIONS

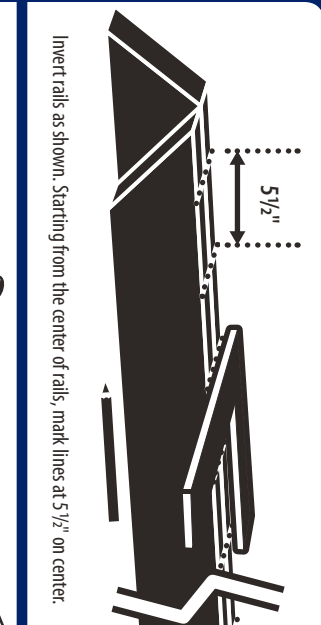


Starting from the center of the wall, mark the center of the baluster.

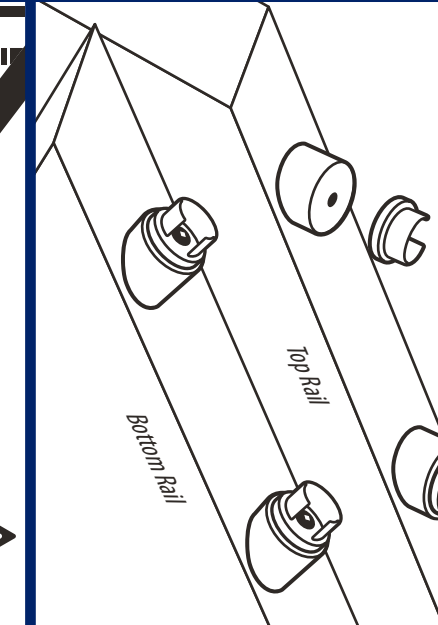
- 1
- 2
- 3



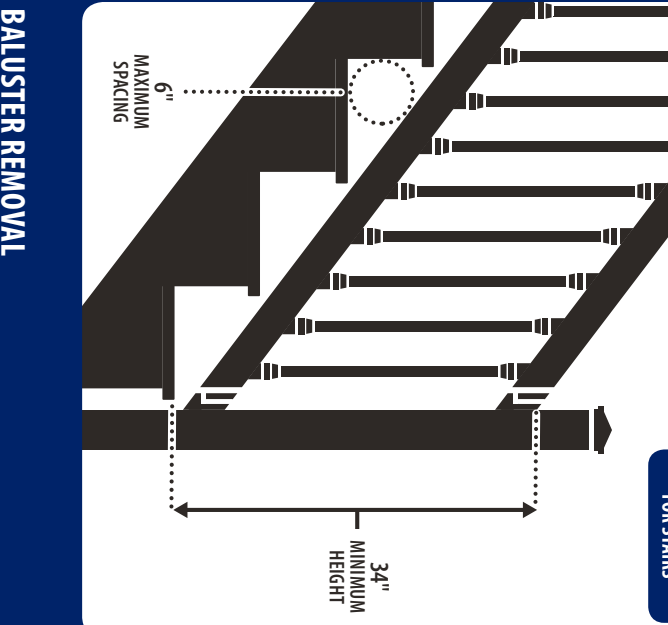
STAIR INSTALLATION



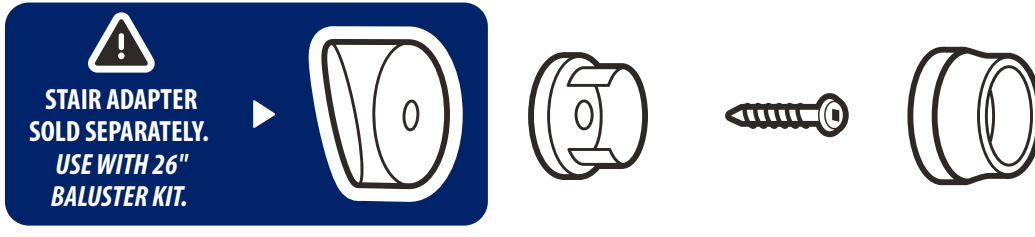
STAIR ADAPTER



USE ON BALUSTERS FOR STAIRS



BALUSTER REMOVAL



STAIR ADAPTER
SOLD SEPARATELY.
USE WITH 26"
BALUSTER KIT.



ColorGuardRailing.com