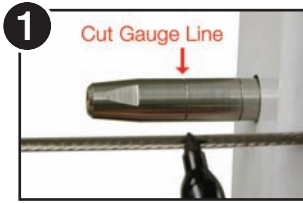


# Installation Instructions for the Swageless Quick-Connect® Cable Hardware.

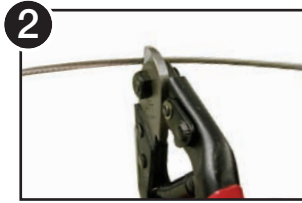
## Using the Cut Gauge Line



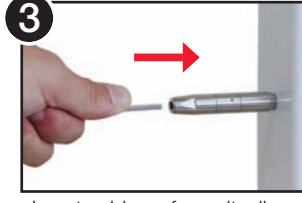
Use the Cut Gauge Line on the Quick-Connect® body to locate and mark the cable for proper trim length. This is typically used when attaching the second in a pair of end fittings.



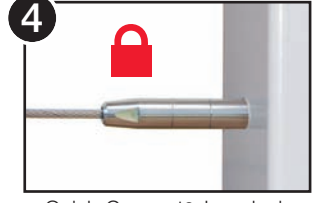
1 Stretch the cable tight. Mark with felt pen at Cut Gauge Line.



2 Trim cable at the mark.



3 Insert cable as far as it will go into fitting. If cable is too long, remove it using a Release Tool and trim as needed.



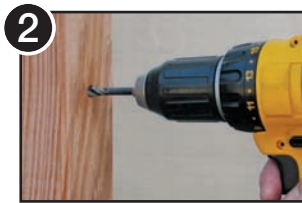
4 Quick-Connect® Jaws lock onto cable automatically. Tighten the cable line using the tension adjustment fitting.

## Installing Quick-Connect® Pivot Fitting

The Pivot Fitting is comprised of a Quick-Connect® body and a stainless steel Hanger Bolt. The Hanger Bolt needs to be installed prior to the Quick-Connect® body. **DO NOT** attempt to install the Hanger Bolt with the Quick-Connect® Fitting attached, or you may damage the fitting.



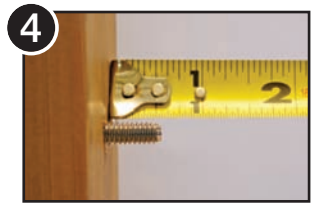
1 Spin Hanger Bolt Installation Tool onto the end of the bolt.



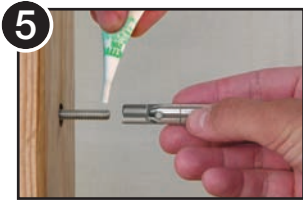
2 Drill 7/64" pilot hole. Harder woods may need larger hole.



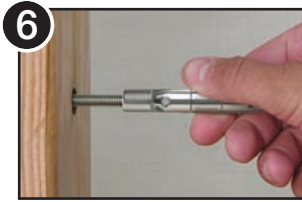
3 Drive Hanger Bolt into post using 7/16" socket or electric drill with 1/2" chuck.



4 Drive until threaded section protrudes approx. 1/2" from post face.



5 Apply a high strength thread locking compound to threads.



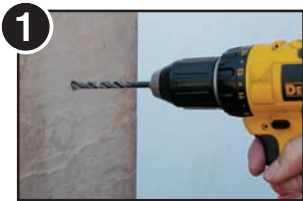
6 Spin Quick-Connect® onto Hanger Bolt until it bottoms out.



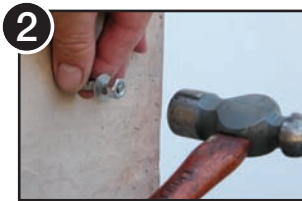
7 Insert cable all the way into Quick-Connect® fitting until it stops. Jaws will lock automatically.

## Installing Quick-Connect® Expansion Anchor

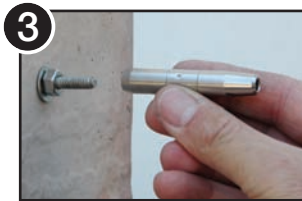
The Expansion Anchor Fitting is comprised of a Quick-Connect® body and a stainless steel Expansion Anchor Bolt. Install the Anchor prior to attaching the Quick-Connect® body. **DO NOT** attempt to install the Anchor Bolt with the Quick-Connect® Fitting attached, or you may damage the fitting.



1 Drill 1/4" hole with masonry bit to 1-1/2" (minimum) depth. Blow debris out of hole.



2 Carefully tap the Expansion Bolt until the machine threads protrude 3/4".



3 Tighten nut to set the anchor. Apply a high strength thread locking compound to threads. Spin Quick-Connect® fitting onto Expansion Bolt until it bottoms out.



4 Insert cable all the way into Quick-Connect® fitting until it stops. Jaws will lock automatically.

## Installing the Quick-Connect® Fixed Surface Mount & Fixed Jaw Ends



1

Measure, mark and drill pilot holes. Bolt/screw Surface Mount Fitting to wall.



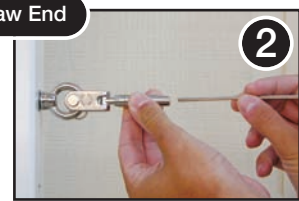
2

Insert cable all the way into Quick-Connect® fitting until it stops. Jaws lock automatically.



1

Install eyebolt. Remove clevis pin and install Quick-Connect® Fixed Jaw fitting.



2

Insert cable all the way into Quick-Connect® fitting until it stops. Jaws lock automatically.

## Installing the Quick-Connect® Internal Thread Adjuster

The Internal Thread Adjuster is comprised of a Quick-Connect® body and a stainless steel machine bolt. Feeney stocks three different bolt lengths, all with #3 square drive heads.



1

Drill 5/16" hole through your post. Counterbore with 1/2" drill on inside face if embedding Quick-Connect® body.



2

Apply a non-permanent thread locking compound to threads.



3

Thread bolt through post and 1/2" into Quick-Connect® fitting. Insert cable all the way into Quick-Connect® fitting, until it stops.



4

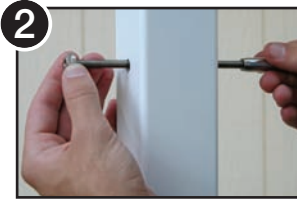
Tighten the bolt to tension the line. Use wrench to prevent the Quick-Connect® from rotating during tensioning.

## Installing the Quick-Connect® Threaded Terminal



1

Drill 5/16" hole through your post. Counterbore with 1/2" drill on inside face if embedding Quick-Connect® body.



2

Attach washer and nut, leaving room for final tensioning of fitting & cable.



3

Insert cable all the way into Quick-Connect® fitting until it stops. Jaws lock automatically.



4

Tighten the nut to tension the line. Use wrench to prevent the Quick-Connect® from rotating during tensioning.

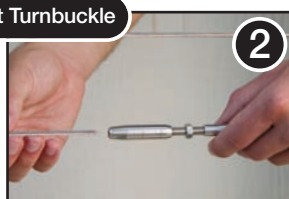
## Installing Quick-Connect® Turnbuckle Fittings

Before installing a Quick-Connect® Surface Mount Turnbuckle or Jaw Turnbuckle fitting, adjust the length of the turnbuckle so that it's set in mid-position (halfway between fully open and fully closed). This will allow optimal adjustment flexibility. The Quick-Connect® Turnbuckle installation is identical to that of the Fixed Surface Mount and Fixed Jaw Fittings shown above.



1

Measure, mark and drill pilot holes. Bolt/screw Surface Mount Turnbuckle to wall.



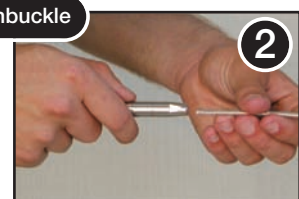
2

Insert cable all the way into Quick-Connect® fitting until it stops. Jaws lock automatically. Spin turnbuckle body to tighten the line.



1

Install eyebolt. Remove clevis pin and install Quick-Connect® Fixed Jaw Turnbuckle.



2

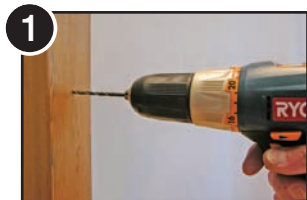
Insert cable all the way into Quick-Connect® fitting until it stops. Jaws lock automatically. Spin turnbuckle body to tighten the line.

# Installation Steps for Quick-Connect® Swivel Turnbuckles

Note: We recommend attaching the non-adjustable fixed-style end fittings before attaching the tension-adjustment-style fittings shown below.



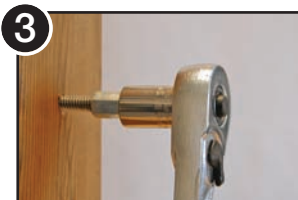
## Installing the Quick-Connect® Pivot Swivel Turnbuckle



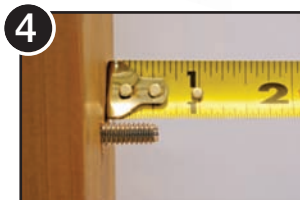
1 Drill 7/64" pilot hole. Harder woods may need larger hole.



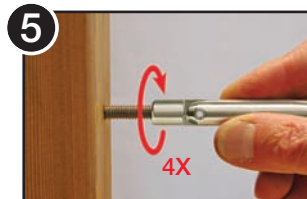
2 Spin Hanger Bolt Installation Tool (sold separately) onto the end of the bolt (or use 2 locking hex nuts—not included).



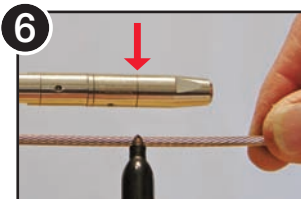
3 Drive Hanger Bolt into post using 7/16" socket or electric drill with 1/2" chuck.



4 Drive until threaded section protrudes approx. 1/2" from post face.



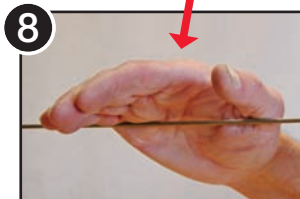
5 Attach the pivot end of the Quick-Connect® and rotate the body 4 full turns.



6 Stretch cable tight across fitting and mark at Cut Gauge Line. Cut cable at mark.



7 Loosen Quick-Connect® 2 full turns and insert cut cable end as far as it will go into the fitting; the jaws will automatically lock on.



8 Hand tighten the Quick-Connect® as far as possible, then swiftly hit the cable line with your palm several times to ensure that jaws are securely seated.

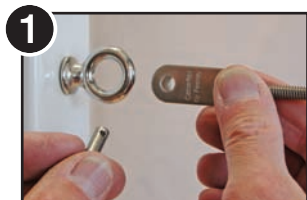


9 Use 3/8" wrenches to tighten the Quick-Connect® to desired final tension.

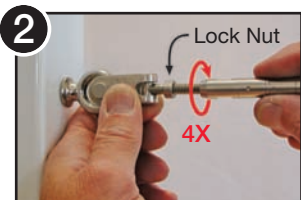


10 Tighten the lock-nut against the Quick-Connect® to prevent the fitting from loosening.

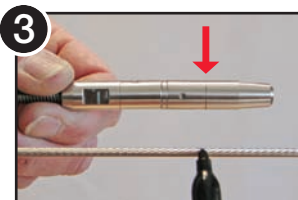
## Installing Quick-Connect® Jaw Swivel Turnbuckle



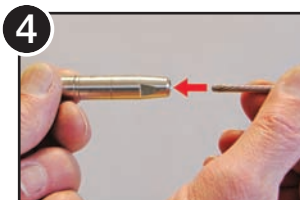
1 Install Jaw onto an eyebolt or eyelet using the removable clevis pin.



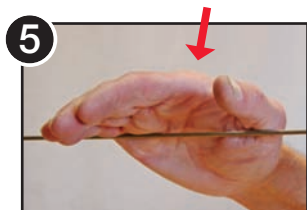
2 Spin the turnbuckle lock-nut onto the threads. Then attach the Quick-Connect® and rotate the body 4 full turns.



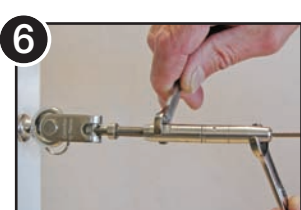
3 Stretch cable tight across fitting and mark at Cut Gauge Line. Cut cable at mark.



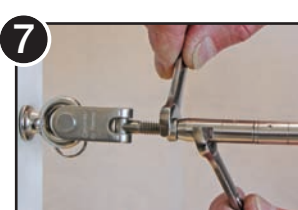
4 Loosen Quick-Connect® 2 full turns and insert cut cable end as far as it will go into the fitting; the jaws will automatically lock on.



5 Hand tighten the Quick-Connect® as far as possible, then swiftly hit the cable line with your palm several times to ensure that jaws are securely seated.

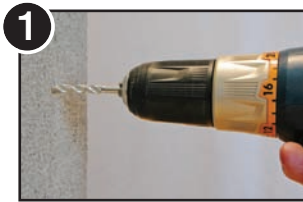


6 Use 3/8" wrenches to tighten the Quick-Connect® to desired final tension.



7 Tighten the lock-nut against the Quick-Connect® to prevent the fitting from loosening.

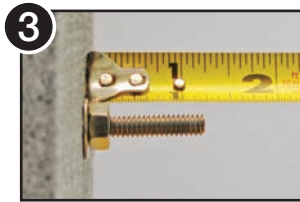
## Installing the Quick-Connect® Expansion Anchor Swivel Turnbuckle



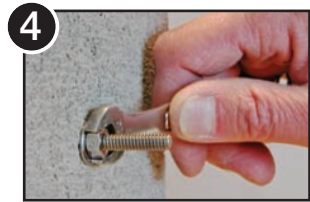
1 Drill 1/4" hole with masonry bit to 1-1/4" (minimum) depth. Blow debris out of hole.



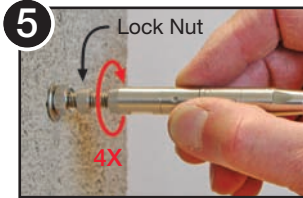
2 Carefully tap the Expansion Anchor (with washer & anchor nut).



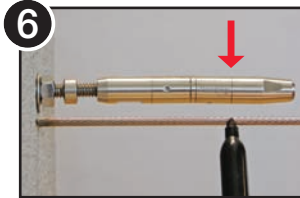
3 Tap until approximately 1-1/4" of the threaded shaft protrudes from the wall.



4 Use 7/16" wrench to tighten anchor nut until anchor is properly seated and locked.



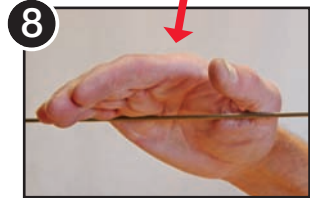
5 Spin the turnbuckle lock-nut onto the exposed threads. Then attach Quick-Connect® and rotate the body 4 full turns.



6 Stretch cable tight across fitting and mark at Cut Gauge Line. Cut cable at mark.



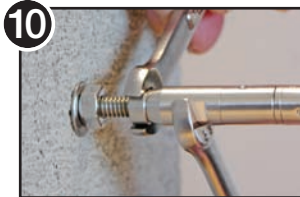
7 Loosen Quick-Connect® 2 full turns and insert cut cable end as far as it will go into the fitting; the jaws will automatically lock on.



8 Hand tighten the Quick-Connect® as far as possible, then swiftly hit the cable line with your palm several times to ensure that jaws are securely seated.



9 Use 3/8" wrenches to tighten the Quick-Connect® to desired final tension.



10 Tighten the lock-nut against the Quick-Connect® to prevent the fitting from loosening.

## Installing the Quick-Connect® Surface Mount Swivel Turnbuckle



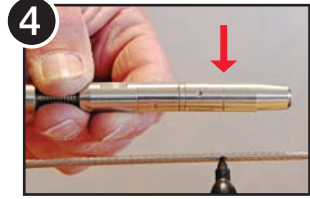
1 Measure, mark, and drill pilot holes.



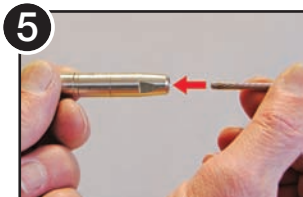
2 Bolt/screw Surface Mount fitting to wall/post (bolts or screws sold separately)



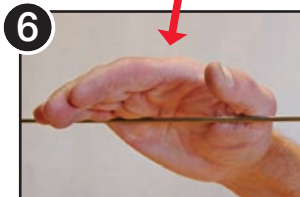
3 Spin the turnbuckle lock-nut onto the exposed threads. Then attach Quick-Connect® and rotate the body 4 full turns.



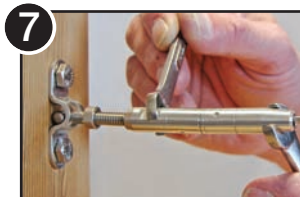
4 Stretch cable tight across fitting and mark at Cut Gauge Line. Cut cable at mark.



5 Loosen Quick-Connect® 2 full turns and insert cut cable end as far as it will go into the fitting; the jaws will automatically lock on.



6 Hand tighten the Quick-Connect® as far as possible, then swiftly hit the cable line with your palm several times to ensure that jaws are securely seated.



7 Use 3/8" wrenches to tighten the Quick-Connect® to desired final tension.



8 Tighten the lock-nut against the Quick-Connect® to prevent the fitting from loosening.