

PHOENIX LED RECESSED LIGHT KIT

YOUR COMPLETE KIT INCLUDES:

- A. 10 LED Flush-mount Deck/Stair Lights
- B. 10 T Connectors
- C. 4 Round Orange Connectors
- D. 100' of 22 Gauge Cable Wire
- E. LED Driver Box with Power Cord – 1 Amp 12 Watt (Capacity up to 30 lights)
- F. Remote Driver
- G. Remote Control

*Note

On the **WARM** white color LED the white wire is **YELLOW**
On the **BLUE** color LED the white wire is **BLUE**
Match these to **WHITE** along the entire run.

REQUIREMENTS:

Before you begin, make sure you have an external, weatherproof, protected 110 volt outlet that meets GFCI (ground fault circuit interrupter) standards. Mount the LED Driver Box 18 inches above the ground. Best results can be achieved when you have access to the underside of your deck or installation surface. Do not install more than 30 Phoenix on this Driver box

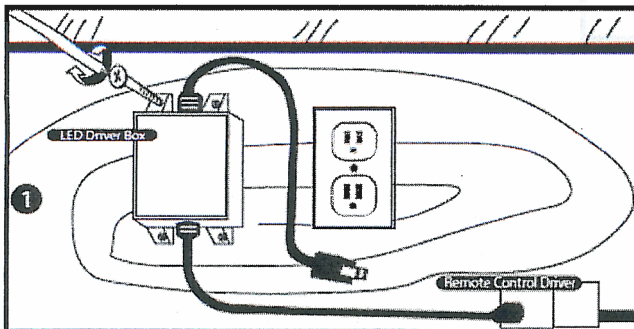


TOOLS:

Power Drill • 1-1/8" spade bit or forstner bit • 3/4" spade bit or forstner bit • *Optional* DLRBIT • Two Wood Screws • Screwdriver • Pliers
Chisel • Tape Measure • Clear silicone caulk or sealant • Eye protection

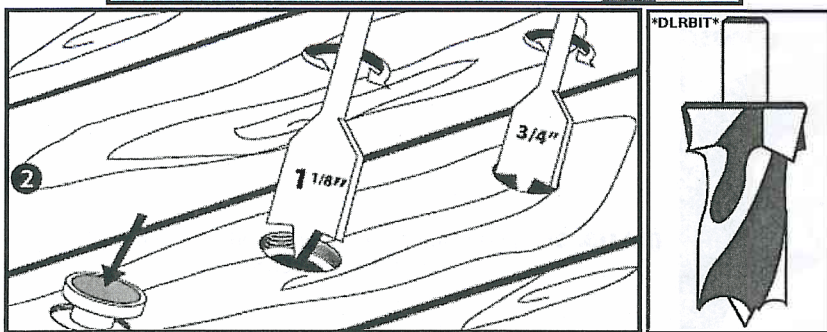
Installation Instructions

CAUTION: Use eye protection when using power tools. Do not install more than 30 deck lights on one driver box. Do not install within 10 feet of a pool, fountain or spa .



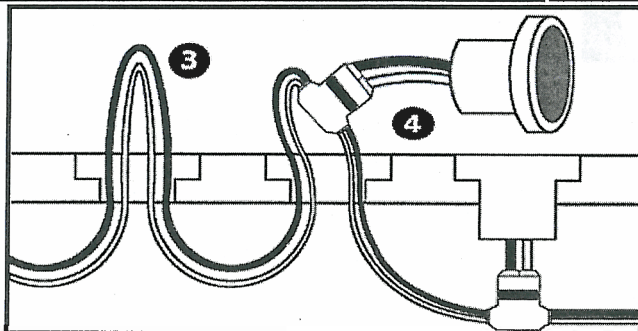
Mount the LED Driver Box 18 inches above the ground near your outlet using screws. Do not plug it in.

{ILLUS. 1} Determine the spacing of your lights on your deck. Be sure to avoid positioning lights over joists and headers or on spacing gaps. For best results, place your lights three to six feet apart. Keep in mind that your farthest light can be no more than 100 feet from the LED Driver Box using the wire included in this kit.



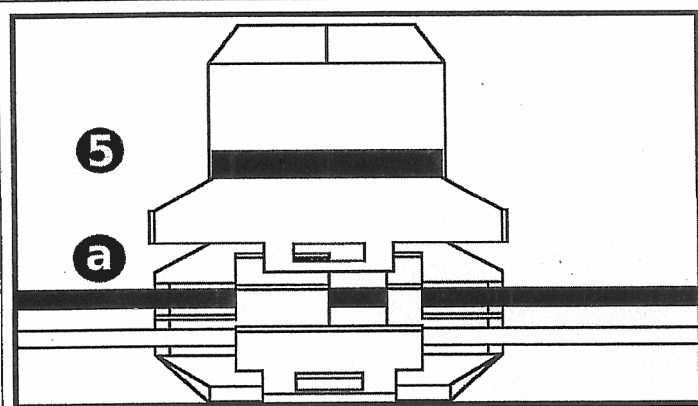
{ILLUS. 2} For each light, using a spade bit or forstner bit (purchase separately), drill a 1-1/8" hole approximately 1/4" deep. Check the depth by placing one of the LED lights upside down in the hole until the shoulder is flush with the decking surface. The bottom of your hole needs to be flat so the light lays in correctly. If necessary, use a chisel to scrape away excess material to flatten the bottom of the 1/4" hole.

Change to a 3/4" spade bit or forstner bit and start in the center of your hole and bore through the decking. This creates the hole for the base of the light and for the wires. Drill all holes to size. * DLRBIT You can also use our 2 stage bit (purchase separate)*



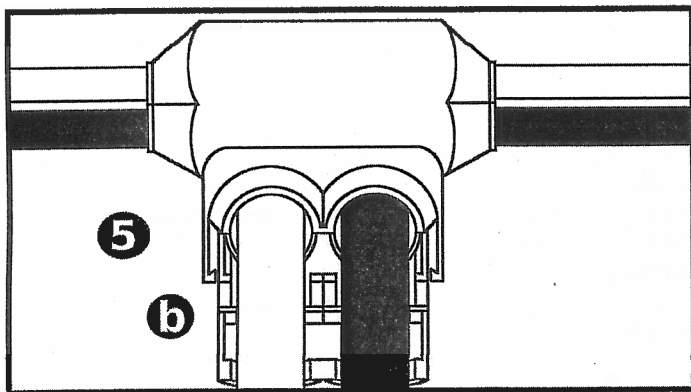
{ILLUS. 3} Starting with the hole farthest from the power source, run the 100 feet of 22 gauge cable wire below the deck and up through each hole, leaving six inches of slack above deck to allow for connections. NOTE: The farthest end of the wire will be capped with a round orange connector at the end of your installation.

{ILLUS. 4} To install a light module, separate the white and black 22 gauge wire with a knife where you want the light, coming up from below the hole in the center of the slack. There is no need to strip the wire. Use a T connector for each light.



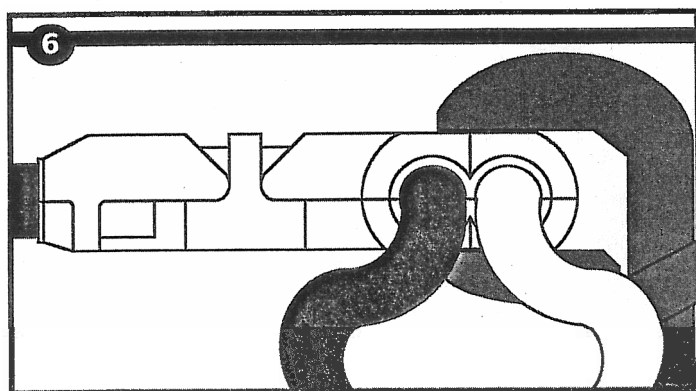
{ILLUS. 5.a } First insert the black and white 22 gauge wire into the widest end of a connector so that it fits snugly in the space provided. It will go all the way through the connector, and continue to the next light.

* The position of the wire is important *

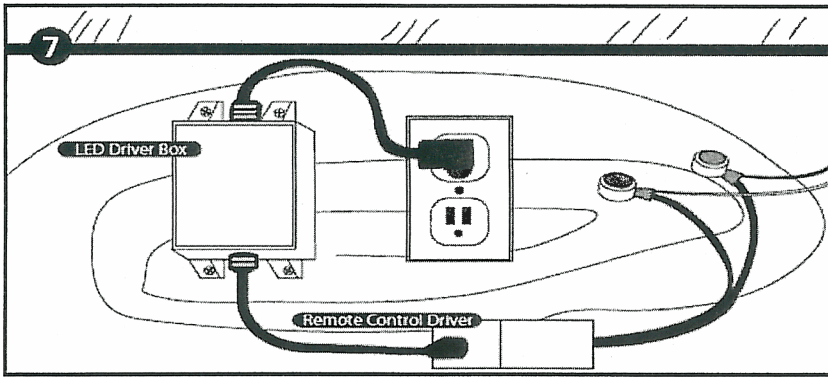


{ILLUS. 5.b } Then take the black and white wire from the light and insert it into each of the holes in the connector. Push the wire from the light in until it stops.

Match the wire colors with **{ILLUS. 5 a & b}**

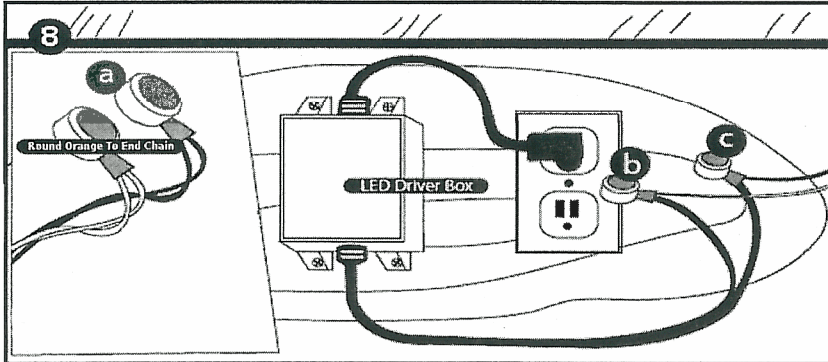


{ILLUS. 6} Squeeze the T connector closed using a pair of pliers on both ends of the connector.



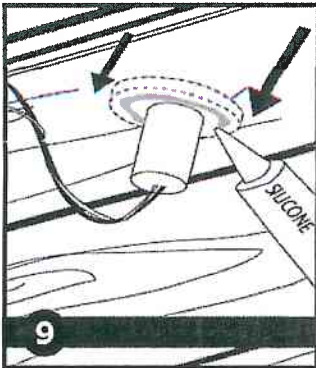
{ILLUS. 7} Once all of the LED deck lights have been connected to the wire, connect the end of the 22 gauge cable wire to the Remote Control Driver using two round orange connectors.

Use of the remote control is optional and the Remote Control Driver can be bypassed by removing it from the LED Driver Box.

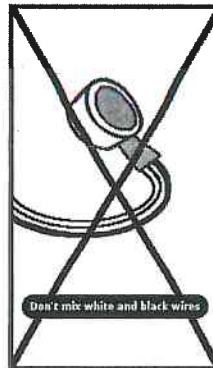


{ILLUS. 8} When all lights are installed, cap the ends of the 22 gauge wire separately with the round orange connectors. Caution: Do not connect the ends together as this will short out the system.

Plug in the power source to make sure all lights are working properly. Unplug before proceeding to the final steps.



{ILLUS. 9} Run a bead of silicone sealant or caulk around the underside of the lip of the light fixtures and feed the wires back through the hole and place the fixture into place. Make sure the module is flush with the decking.



{Finally} Plug in the power cord, and operate using either the remote control or the light switch.

TROUBLE SHOOTING TIP:

Make sure all wires are connected in like color pairs. Make sure the remote control has a battery and it is installed correctly. If you choose to bypass the remote, be sure to remove the remote driver from the set-up and connect the 22 gauge pair wires directly to the power box.

Warranty Information

The Phoenix Recessed Lighting Kit is covered by a one year limited warranty.

This product is warranted against defects in materials or workmanship as follows:

Units will be repaired or replaced, at our discretion, without charge for parts or labor for one year from date of purchase. Repairs and parts fees are the responsibility of the product owner after the indicated period of one year. The limited warranty cannot be transferred and is valid only for the purchaser of the product. It does not cover damage or failure caused by or attributable to natural disaster, abuse, misuse, improper or abnormal use, faulty installation, improper maintenance, lightning, or other incidences of excessive voltage, or any repairs or tampering by other than our Warranty Services Department. Products proven defective in workmanship or material are covered solely by the remedies of repair or replacement as provided by the terms of this warranty. Under no circumstances shall Aurora Deck Lighting be liable for any loss or damage, direct, or incidental, arising out of the use of or inability to use this product. Some states do not allow limitations on how long an implied warranty lasts or the exclusions or limitations of incidental or consequential damages, so the above limitations may not apply to product owners in certain states.

Aurora Deck Lighting
960 E. Milwaukee Street
Whitewater, WI 53190
www.auroradecklighting.com

Repairs will be returned to the customer using UPS Ground service. Other carriers may be used at our discretion. If faster delivery is requested, the product owner must pay the cost difference over the UPS Ground service charge. Aurora Deck Lighting is not liable for products lost or damaged during shipment.