

STEP 1 — Starting the First Board

Install screw straight down through start/stop clip and into ledger board. Screw should be in line with center of joist. It is important that this board is straight and well secured.

See *Illustration A*

STEP 2 — Position Fasteners

Fully insert connector clip into grooved edge of deck board. Screw hole should be in line with the center of joist. See *Illustration B*

STEP 3 — Install First Fastener

While standing on deck board, install provided screw at 45° angle through fastener and into joist, while applying pressure on fastener. Install one fastener and screw at each support joist. See *Illustration D*

Make sure fastener body is vertical to deck board and the screw is holding fastener down tight to deck board.

STEP 4 — Completing Installation of Boards

- Place next deck board into position. Holding the deck board 2" back from fastener, push deck board with enough force to lock into place.
- Check gap between boards for consistency. Apply force to ensure board is fully installed engaging boards with 1/4" bump-stop tab.

Trex Hideaway™ fasteners will provide proper 1/4" gapping when installed correctly. See *Illustration E*

STEP 5A — Installing the Last Board using Fascia Board (Option 1)

To finish, install start/stop clip and install screw at a 45° angle through clip tab and into joist. Install a vertical fascia board flush with deck board surface. See *Illustration C*

STEP 5B — Installing the Last Board using with Overhang (Option 2)

Prior to installing last board, predrill a pilot hole at a 45° angle through rim joist. Once hole is drilled, put last board in place and install a 2 1/2" decking screw into predrilled pilot hole. See *Illustration F*

COVERAGE

CONNECTOR CLIPS NEEDED

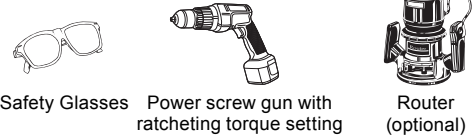
- Multiply the number of joists by the number of decking boards to equal the number of fasteners needed.
- 90 fasteners will cover approximately 50 sq. ft. (using 5.5" decking boards on 16" centers).
- To calculate the number of start/stop clips needed, multiply the width of deck x .75. If clips will be used for last board, double the amount calculated above.

Getting Started / Installing Tips

IMPORTANT! Read all instructions carefully and completely to ensure proper installation.

WARNING! Parts have sharp points & edges. Use extreme caution when handling & installing. Wear safety glasses at all times.

Tools & Materials Needed



Terms to Know



Illustration A

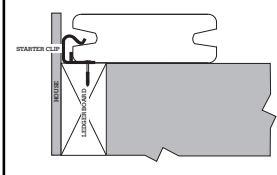


Illustration D

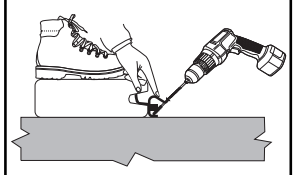


Illustration B

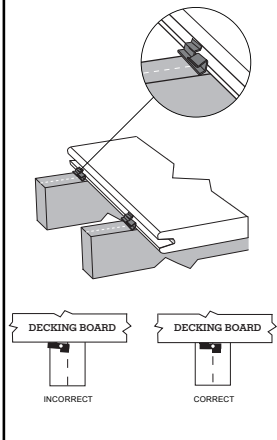


Illustration E

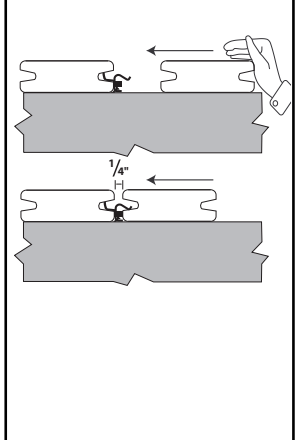


Illustration C

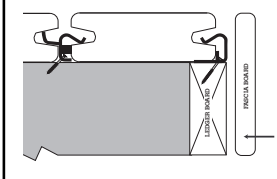
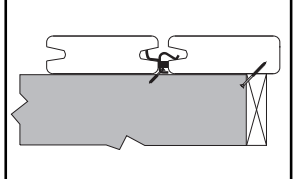


Illustration F



FASTENERS NEEDED

Joist Spacing (on center)	Deck Size sq. ft.				
	100	200	300	400	500
12"	210	441	672	882	1113
16"	175	336	512	672	848
24"	110	231	352	462	583

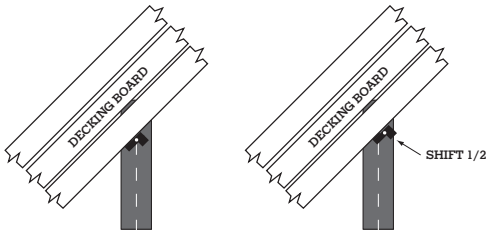
Trex Hideaway™ Hidden Fasteners

What tools are required?

No special tools are required when using pre-grooved deck boards, just a drill with screwdriver tip. When using decking without the grooved edge, a router with proper bit will be needed to create a groove in board edge at each joist or along the entire edge of the deck board.

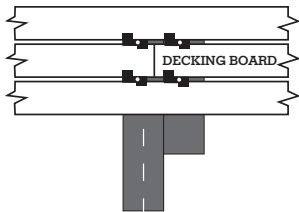
45° angle installation

Where deck is in the walled corner of the house: Always start with small triangular piece of decking in that corner and work your way out. When installing Trex Hideaway™ fasteners, offset the center 1/2" towards the long point of joist so screw will not exit side of joist when driven.



How to do a butt seam

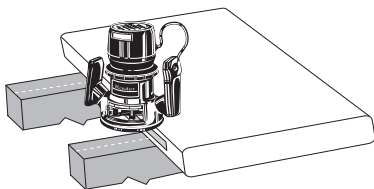
First, install a small framing board (10 – 12") alongside the joist in which the seam is going to land. Install additional fastener into previous board above small framing block. Line up your first board in the center of the joist and the small framing board. Install fasteners and screws at each joist of the first board including the joist at the seam. Then install your second board in the same fashion, and place a second fastener at the seam attaching it to the small framing block. Make sure you follow end-to-end gapping specifications.



To use the Trex Hideaway Fasteners on unslotted boards:

Use a router with proper routing bit* to create a groove at every intersection of the deck board and support joists, as well as entire edge of the board.

*Contact your Trex distributor for the Trex Hideaway Router Bit.



How to replace a board

- Make two parallel cuts down the center of the board to be replaced, and remove the center piece.
- Remove the remaining pieces of decking from the tabs.
- Using a claw hammer bend the tab, on the side of the board with the screw heads showing, downward so that it does not interfere with the spacer tab.
- Position new board into place, and carefully slide onto remaining tabs, once fully installed the deck board will drop into position.
- Once board is set into position, secure using a 1/8th inch drill bit, place the bit into the seam of the board and into the groove, and predrill a pilot hole through the board at a 45° angle.
- Install a stainless steel finish screw through groove into joist to hold the board in place.

How to install stairs

Option 1

- Install start/stop clip against riser.
- Install first board and connector clip.
- Install 2nd board.
- Install face screw from the top of the 2nd board into the riser.

Option 2

- Install start/stop clip against riser.
- Install first board and connector clip.
- Fasten 2x4 block to stringers.
- Predrill hole through 2x4 upward at an angle for face screw.
- Install 2nd board.
- Install screw from below through 2x4 into bottom of tread.

